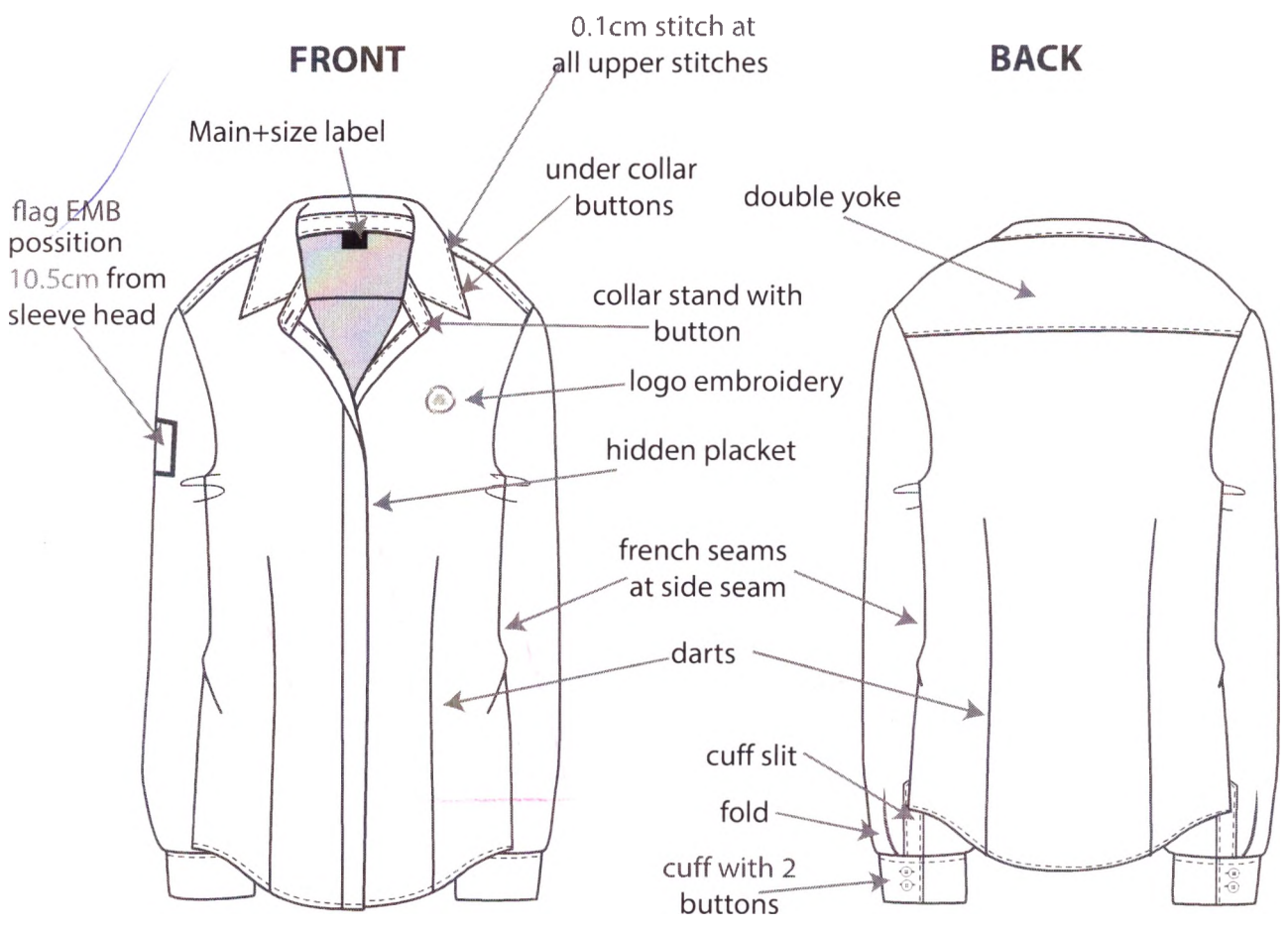


DATE: 15/9/17

DEPARTMENT: women	BRAND:	DESIGNER:
STYLE NO.:	SEASON:	DESCRIPTION: button up shirt long sleeve
FABRIC COMPOSITION AND TREATMENT: 72%cotton 24%nylon 4%spandex 40X40+40D 120*70 105g		FABRIC WEIGHT/ GG:
COMBO'S QTY:	DD:	

PLEASE DEVELOP FIRST SAMPLE ONLY AFTER RECEIVING CONFIRMATION.  
**FIRST SAMPLE SHOULD BE AS SIMILAR AS POSSIBLE TO ORIGINAL.**



color: Optic white  
please send LD

STYLE NO.

WORKMANSHIP

FRONT



BACK



double hidden placket

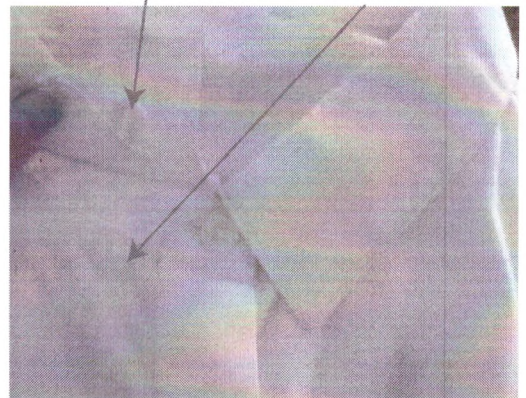


cuff



inner collar loop

collar inner buttons



pls. ignore contrast colors  
all colors should be paper white

BUTTON : should be DTM  
engraved



STYLE NO.

ACCESORIES AND TRIMS

chest logo EMB

text should be jet black embroidery  
 frame should be blue 19-4049tpx  
 (same as flag EMB)

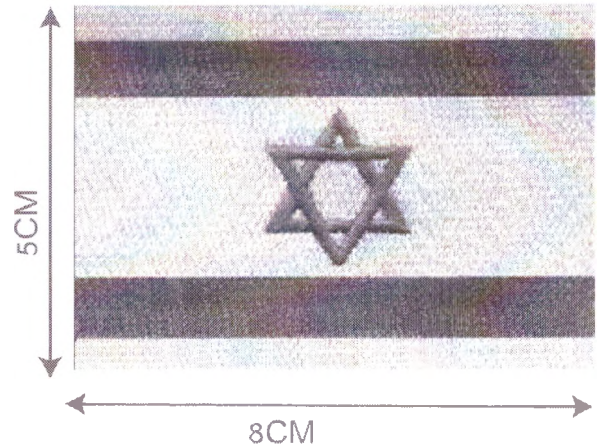


EMB



sleeve flag EMB

position 10.5cm from sleeve head  
 optic white  
 blue 19-4049tpx



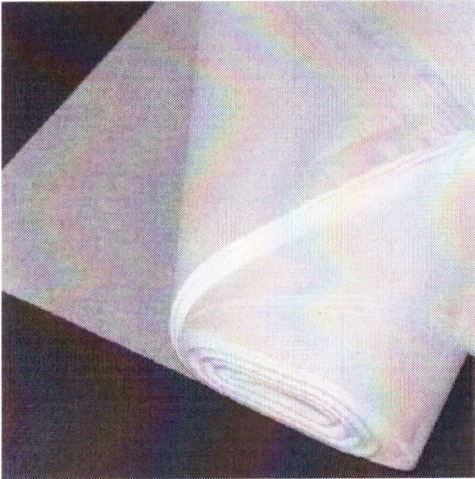
□

Trim	size	color	quality	quantity
button	16L	DTM	plastic	14pcs

STYLE NO.

PACKING

tissue paper inside folding



silica gel inside folding



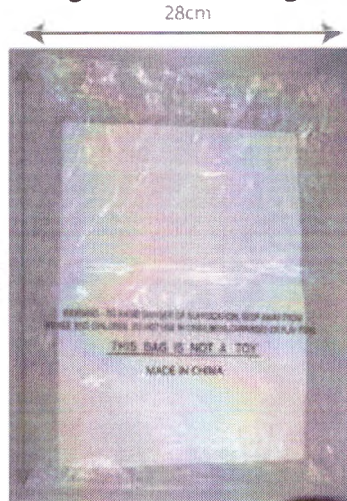
shirt folding way



warning text on polybag



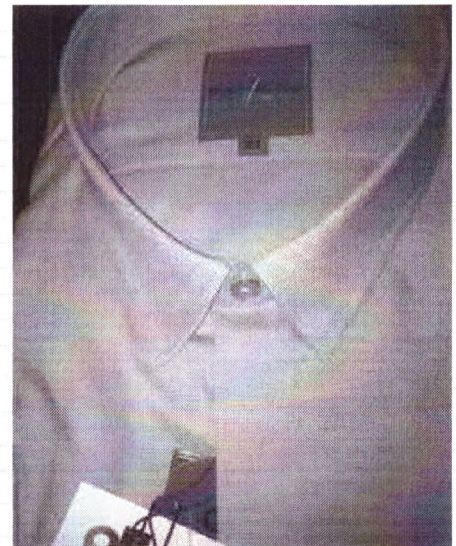
garment foding inside polybag



carton collar stand



transperant plastic round collar



STYLE NO.

SIZE SPEC

button up shirt		Supplier's style #		Season							page		
											1/2		
		Supplier's Name		Fabric Comp.							Date		
											16/9/17		
<b>SIZE CHART:</b>					36	38	40	42	44	46	48	grading	Tolerance
A	1/2 chest width 1cm under armhole				45	47	50	53	56	59	62	2/3	0.5
B	dist. From h.s.p to waist				39.5	40.5	41.5	42.5	43.5	44.5	45.5	1	0.5
C	1/2 waist width				43	45	48	51	54	57	60	2/3	0.5
D	1/2 bottom width				48	50	53	56	59	62	65	2/3	0.5
E	total length - from h.s.p				63	64	65	66.5	68	69.5	71	1/1.5	0.5
F	neck opening				16.5	17	17.5	18	18.5	19	19.5	0.5	0.3
G	front neck drop - h.s.p to neckline seam				9	9.5	10	10.5	11	11.5	12	0.5	0
H	back neck drop				1.5	1.5	1.5	1.5	1.5	1.5	1.5	0	0
I	back width from shoulder to shoulder				37.5	38.5	39.5	40.75	42	43.25	44.5	1/1.25	0.5
J	1/2 armhole straight				17.8	18.5	19.2	19.9	20.6	21.3	22	0.7	0.3
K	1/2 bicep width - 1cm under armhole				15.3	16	16.7	17.4	18.1	18.8	19.5	0.7	0.3
L	1/2 elbow width - 20cm under armhole				13.5	14	14.5	15	15.5	16	16.5	0.5	0.3
M	sleeve length incl. cuff				62	62	62	62	62	62	62	0	0.5
N	1/2 sleeve opening				9.5	10	10.5	11	11.5	12	12.5	0.5	0.3
O	cuff height				4	4	4	4	4	4	4	0	0
P	number of buttons on cuff				1	1	1	1	1	1	1	0	0
Q	collar stand height				2	2	2	2	2	2	2	0	0
R	collar height at c.b				4	4	4	4.5	4.5	4.5	4.5	0/0.5	0
S	collar point				4.5	4.5	4.5	4.5	4.5	4.5	4.5	0	0
T	placket width				2.5	2.5	2.5	2.5	2.5	2.5	2.5	0	0
U	number of buttons - inc' collar				8	8	8	8	8	8	8	0	0
V	dist. Between buttons from h.s.p				7.5	7.5	7.5	7.5	7.5	7.5	7.5	0	0
W	chest button				27	27.5	28	28.5	29	29.5	30	0.5	0.3
X	back yoke height on CB				10	10.5	11	11.5	12	12.5	13	0.5	0.3
Y	sleeve slit height not inc. cuff				9.5	9.5	9.5	9.5	9.5	9.5	9.5	0	0
Z	sleeve slit width				2	2	2	2	2	2	2	0	0
Z1	chest logo EMB. Position from hsp				19.5	20	20.5	21	21.5	22	22.5	0.5	0.3
Z2	sleeve flag EMB. From sleeve head				10.5	10.5	10.5	10.5	10.5	10.5	10.5	0	0

pls. send 1st sample size 36+42

polybag warning

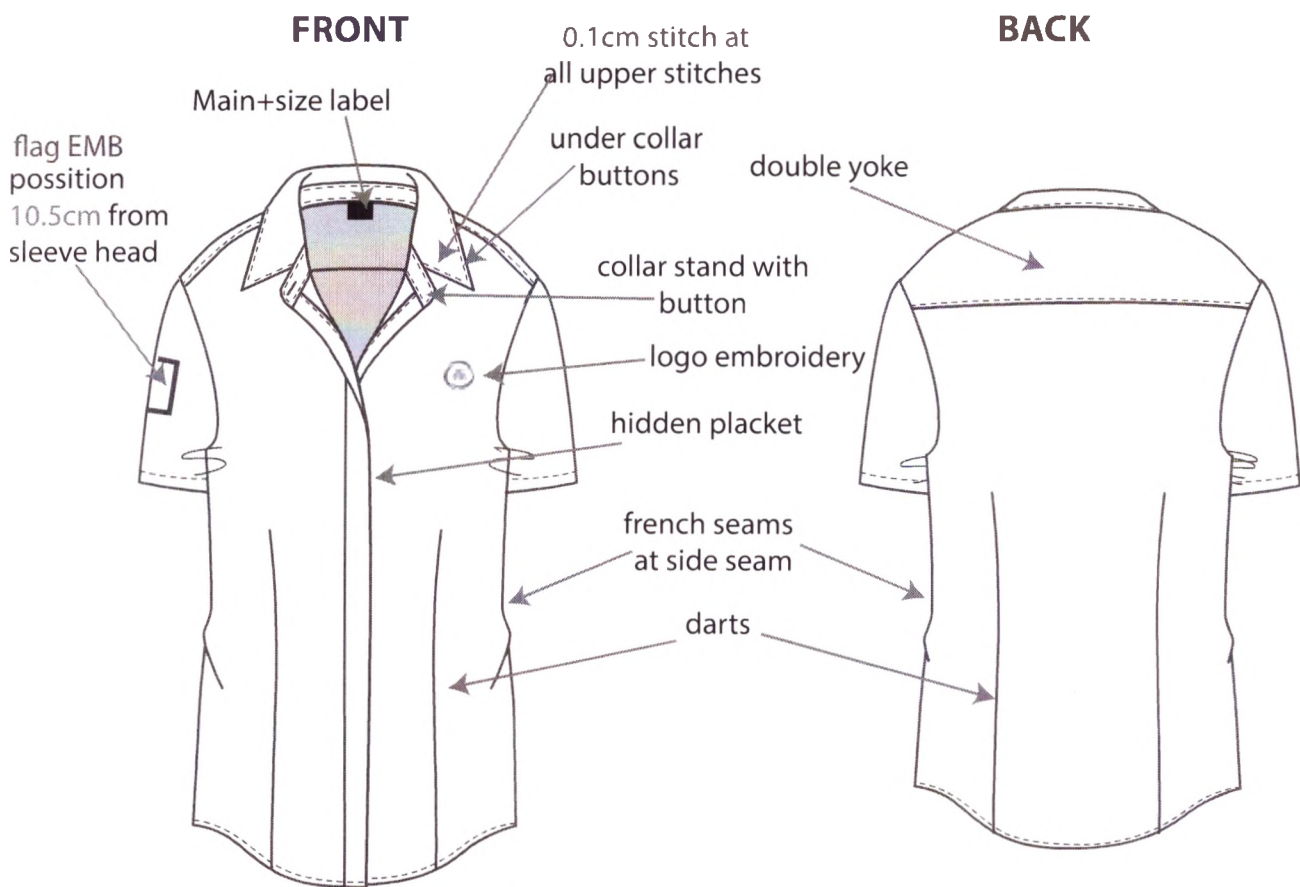
**WARNING - TO AVOID DANGER OF SUFFOCATION , KEEP AWAY FROM  
BABIES AND CHILDREN . DO NOT USE IN CRIBS , BEDS , CARRIAGES OR PLAY PENS .**

**THIS BAG IS NOT A TOY**

**MADE IN CHINA**

↑  
to be update

DATE: 15/9/17		
DEPARTMENT: <b>women</b>	BRAND:	DESIGNER:
STYLE NO.:	SEASON:	DESCRIPTION: <b>button up shirt short sleeve</b>
FABRIC COMPOSITION AND TREATMENT: 72%cotton 24%nylon 4%spandex 40X40+40D 120*70 105g		FABRIC WEIGHT/ GG:
COMBO'S QTY:	DD:	
PLEASE DEVELOP FIRST SAMPLE ONLY AFTER RECEIVING CONFIRMATION. <b>FIRST SAMPLE SHOULD BE AS SIMILAR AS POSSIBLE TO ORIGINAL.</b>		



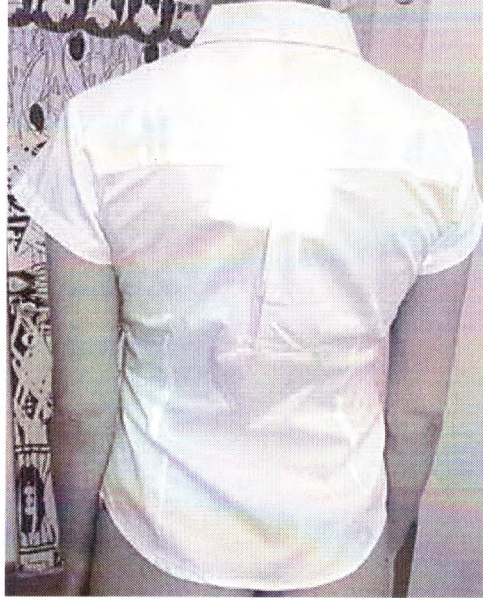
color: Paper white  
please send LD

STYLE NO.
WORKMANSHIP

FRONT



BACK

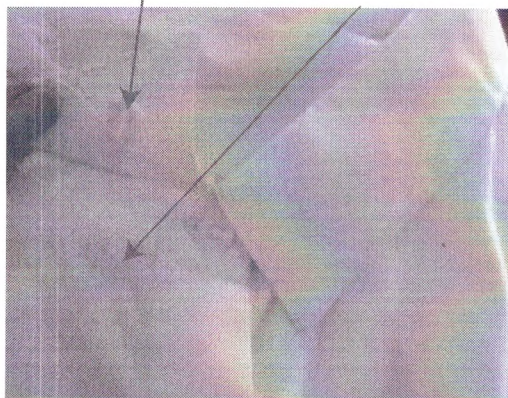


double hidden placket



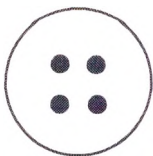
inner collar loop

collar inner buttons



pls. ignore contrast colors  
all colors should be paper white

BUTTON : should be DTM  
engraved



STYLE NO.

ACCESORIES AND TRIMS

chest logo EMB

text should be jet black embroidery  
frame should be blue 19-4049tpx  
(same as flag EMB)

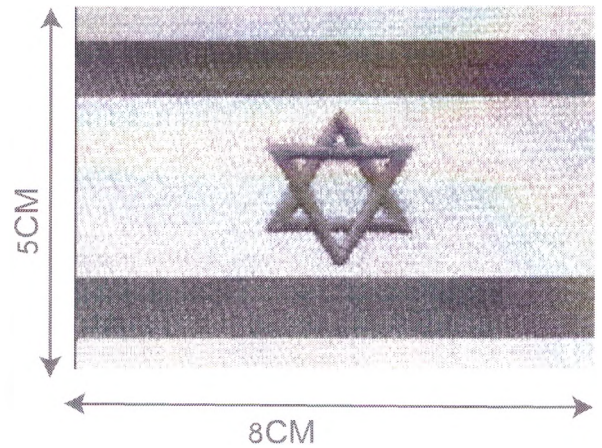


EMB



sleeve flag EMB

position 10.5cm from sleeve head  
optic white  
blue 19-4049tpx

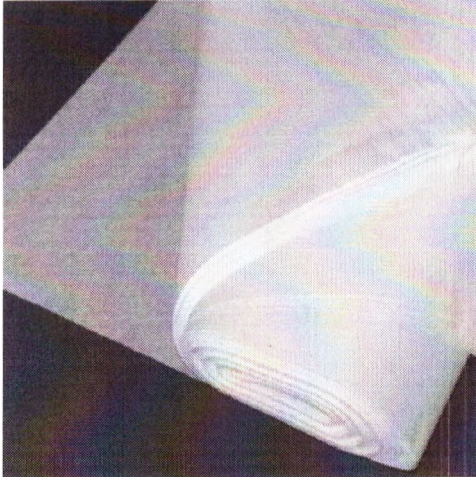


Trim	size	color	quality	quantity
button	16L	DTM	plastic	10pcs

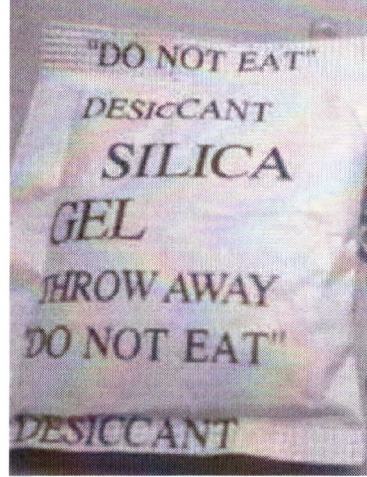
STYLE NO.

PACKING

tissue paper inside folding



silica gel inside folding



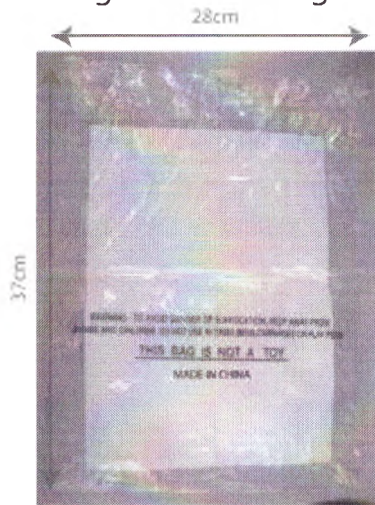
shirt folding way



warning text on polybag



garment folding inside polybag



carton collar stand



transparent plastic round collar



STYLE NO.

SIZE SPEC

		Supplier's style	Season									page			
		Supplier's Name	Fabric Comp.								Date				
													16/9/17		
SIZE CHART:															
					36	38	40	42	44	46	48	grading	Tolerance		
<b>A</b>	1/2 chest width 1cm under armhole				44	46	49	52	55	58	61	2/3	0.5		
<b>B</b>	1/2 waist width at narrowest point (36.5 from HPS)				40.5	42.5	45.5	48.5	51.5	54.5	57.5	2/3	0.5		
<b>C</b>	1/2 bottom width straight				46.5	48.5	51.5	54.5	57.5	60.5	63.5	2/3	0.5		
<b>D</b>	total length - from h.s.p				62	63	64.5	66	67.5	69	70.5	1/1.5	0.5		
<b>D1</b>	total length BACK - from h.s.p				64.5	65.5	67	68.5	70	71.5	73	1/1.5	0.5		
<b>E</b>	neck opening				15.5	16	16.5	17	17.5	18	18.5	0.5	0.3		
<b>F</b>	front neck drop from HPS				9.5	10	10.5	11	11.5	12	12.5	0.5	0.3		
<b>G</b>	back neck drop from HPS				1	1	1	1	1	1	1	0	0		
<b>H</b>	Across shoulders seam to seam				37.5	38.5	39.5	40.8	42	43.3	44.5	1/1.25	0.5		
<b>H1</b>	back width at yoke cut, seam to seam				36	37	38	39.3	40.5	41.8	43	1/1.25	0.5		
<b>I</b>	1/2 armhole straight				18.8	19.5	20.2	20.9	21.6	22.3	23	0.7	0.3		
<b>J</b>	sleeve length				12	12.5	13	13.5	14	14.5	15	0.5	0.3		
<b>L</b>	1/2 sleeve opening (edge button closed)				17.5	18.2	18.9	19.6	20.3	21	21.7	0.7	0.3		
<b>M</b>	cuff double fold height				2	2	2	2	2	2	2	0	0		
<b>N</b>	collar stand height				2	2	2	2	2	2	2	0	0		
<b>O</b>	collar height at c.b				4.5	4.5	4.5	4.5	4.5	4.5	4.5	0	0		
<b>P</b>	collar point				5	5	5	5	5	5	5	0	0		
<b>Q</b>	placket width				2.5	2.5	2.5	2.5	2.5	2.5	2.5	0	0		
<b>R</b>	number of buttons on cf, incl. collar stand				8	8	8	8	8	8	8	0	0		
<b>S</b>	fold width at back yoke				2.5	2.5	2.5	2.5	2.5	2.5	2.5	0	0		
<b>T</b>	chest logo EMB. Position from hsp				19.5	20	20.5	21	21.5	22	22.5	0.5	0.3		
<b>U</b>	sleeve flag EMB. From sleeve head				10.5	10.5	10.5	10.5	10.5	10.5	10.5	0	0		

pls. send 1st sample size 36+42

polybag warning

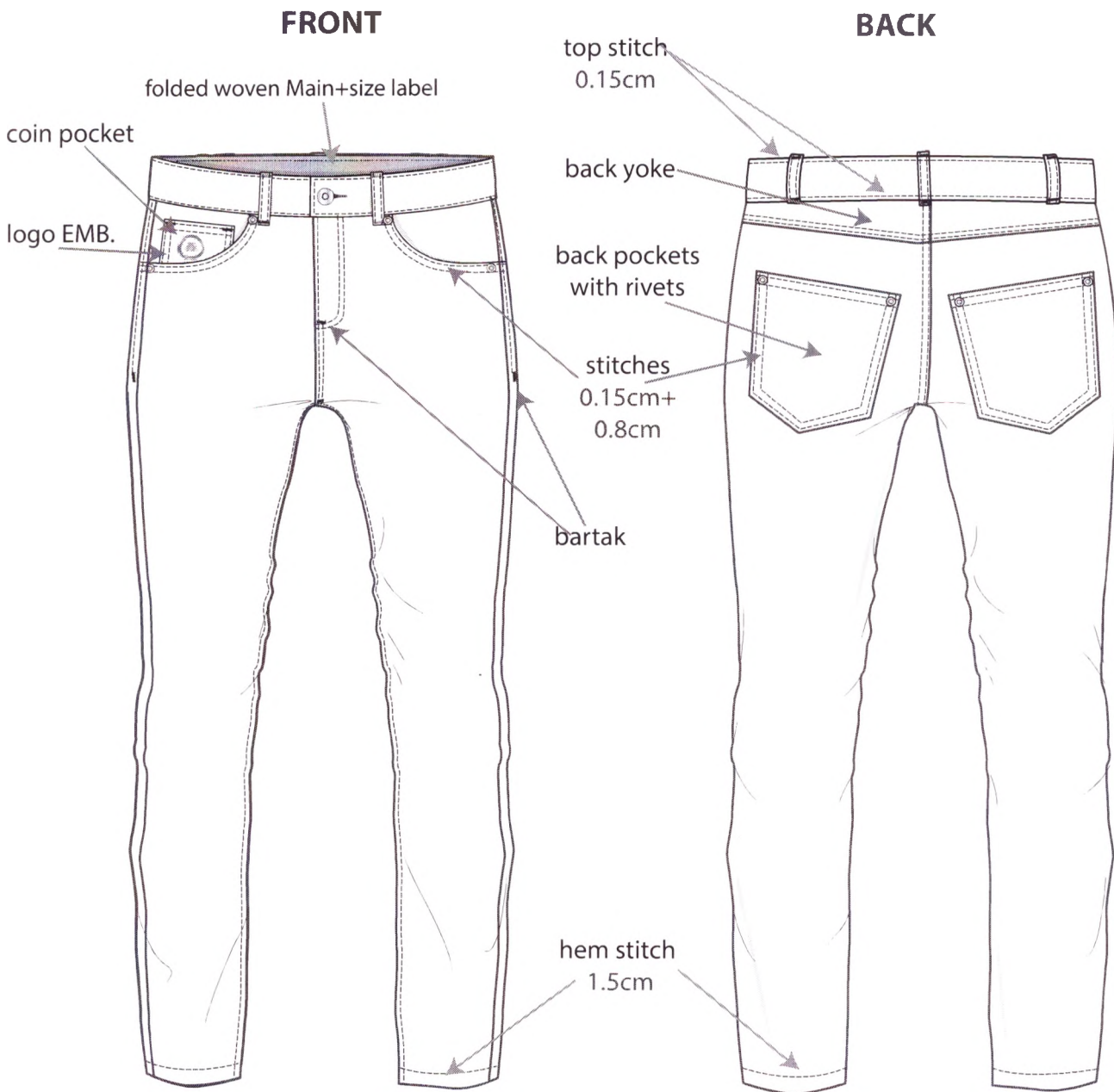
**WARNING - TO AVOID DANGER OF SUFFOCATION , KEEP AWAY FROM  
BABIES AND CHILDREN . DO NOT USE IN CRIBS , BEDS , CARRIAGES OR PLAY PENS .**

**THIS BAG IS NOT A TOY**

**MADE IN CHINA**

↑  
to be update

DATE: 15/9/17		
DEPARTMENT: women	BRAND:	DESIGNER:
STYLE NO.:	SEASON:	DESCRIPTION: five pocket skinny
FABRIC COMPOSITION AND TREATMENT: 98%cotton 2%spnadex 300g		FABRIC WEIGHT/ GG:
COMBO'S QTY:	DD:	
PLEASE DEVELOP FIRST SAMPLE ONLY AFTER RECEIVING CONFIRMATION. <b>FIRST SAMPLE SHOULD BE AS SIMILAR AS POSSIBLE TO ORIGINAL.</b>		



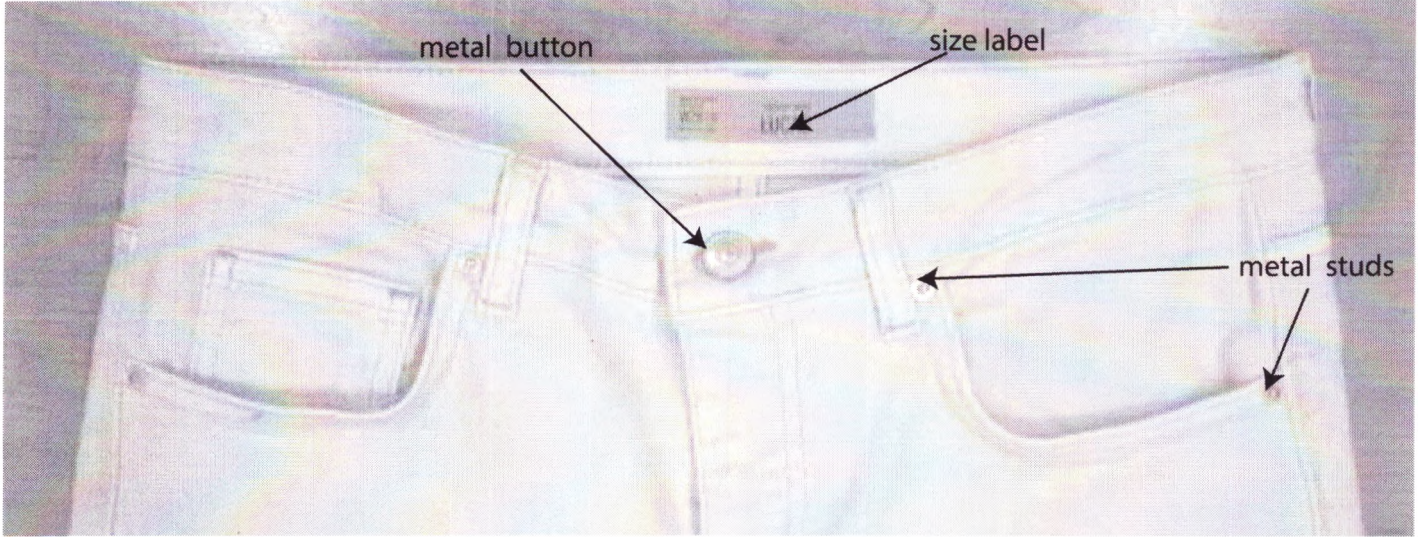
color: Black  
please send LD  
all stitches DTM

ZIPPER SHOULD BE: YKK, YKK Vislon, YKK Zaglan, Opti. Prym or Albert Zips

STYLE NO.

WORKMANSHIP

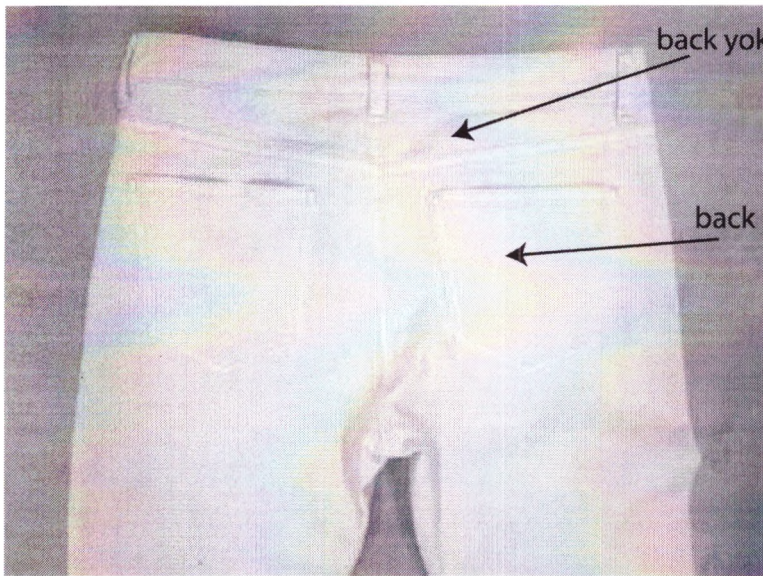
front upper part



metal button

size label

metal studs

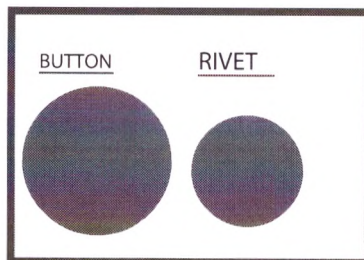


back yoke

back pockets



inner belt- clean



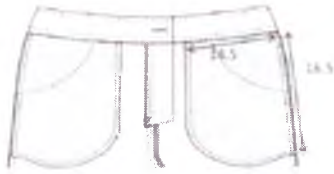
BUTTON

RIVET

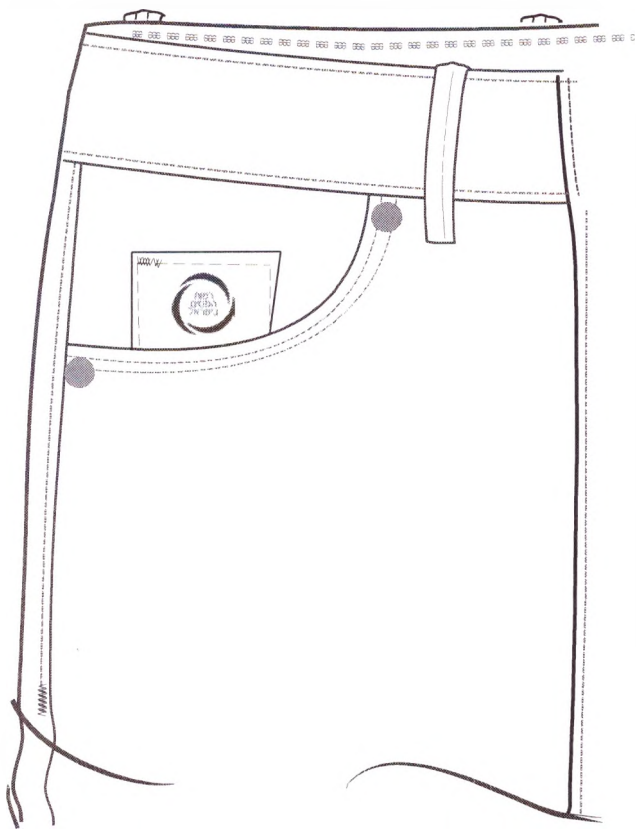
STYLE NO.

ACCESORIES AND TRIMS

size chart - for size 36



pocket lining should be 100 % cotton DTM



logo EMB at coin pocket

text should be optic white embroidery  
frame should be blue 19-4049tpx



3.5 cm

EMB



correct logo

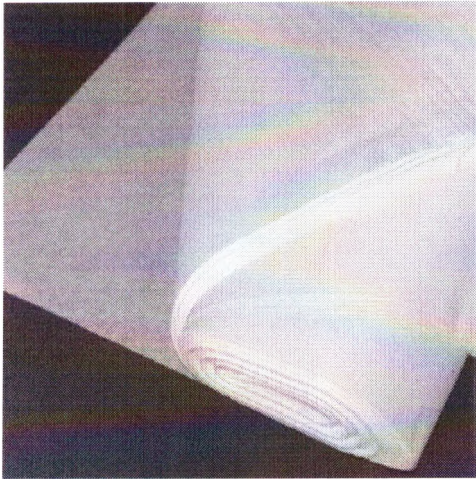


Trim	size	color	quality	quantity
button	31L	black tin	metal	1
stud	14L	will be advised later	metal	6
zipper	accordign to size chart	will be advised later	YKK	1

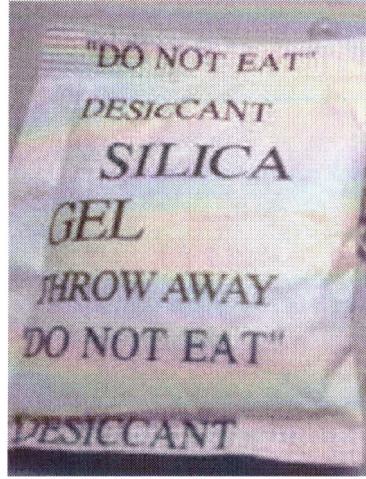
STYLE NO.

PACKING

tissue paper inside folding



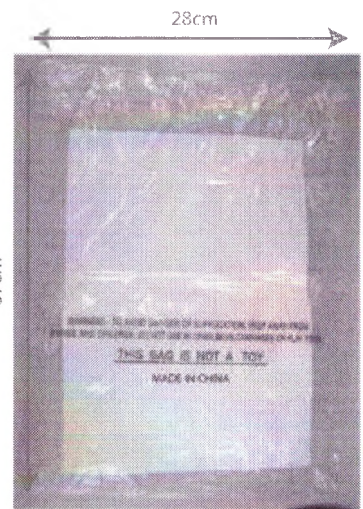
silica gel inside folding



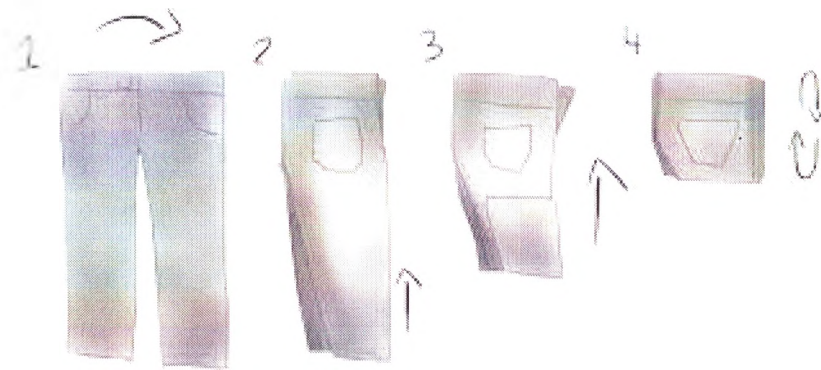
garment foding inside polybag



garment foding inside polybag



pants folding way



polybag warning

**WARNING - TO AVOID DANGER OF SUFFOCATION , KEEP AWAY FROM BABIES AND CHILDREN . DO NOT USE IN CRIBS , BEDS , CARRIAGES OR PLAY PENS .**

**THIS BAG IS NOT A TOY**

**MADE IN CHINA**

↑  
to be update

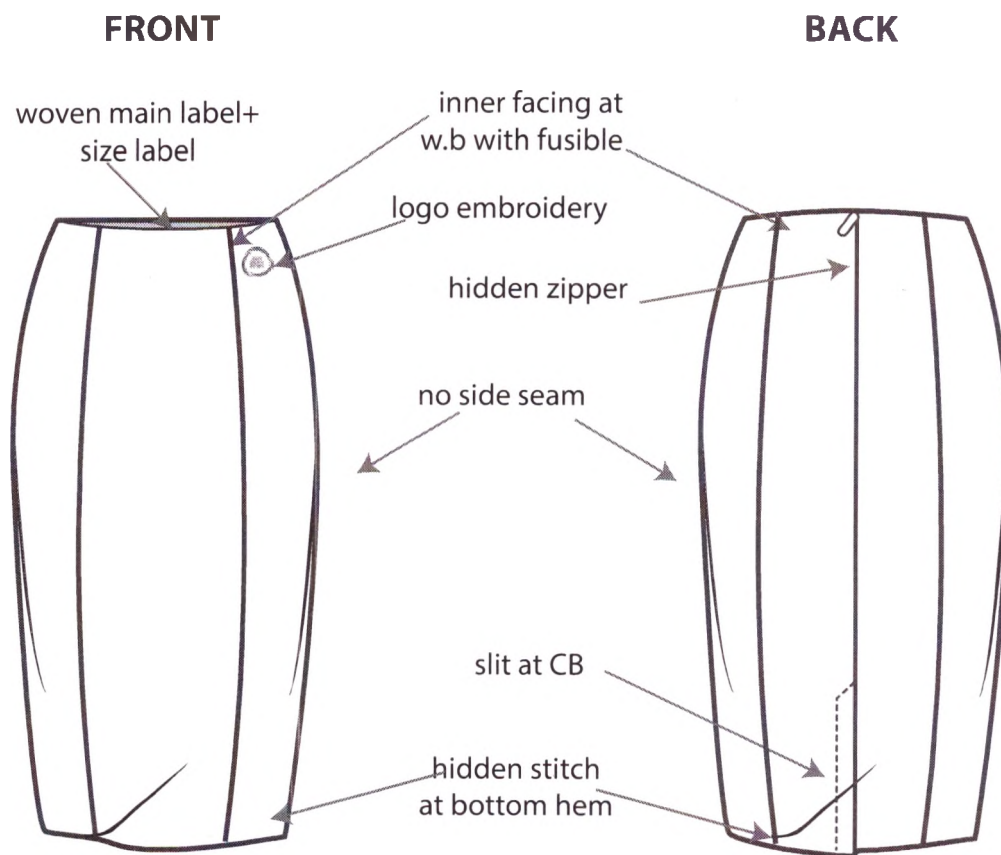
STYLE NO.

SIZE SPEC

	Style No.	Supplier's style #	Season			page							
						1/2							
	Supplier's Name	Fabric Ccmp.			Date								
		98% cotton 2% elastane			15/9/17								
SIZE CHART:													
			34	36	38	40	42	44	46				
A	1/2 waist width (straight)		33	35	37	39	41	43	45			grading	Tolerance
B	1/2 hips width 14 cm from belt side cut line- straight		40	42	44	46	48	50	52			2	0.7
C	1/2 up leg width 1cm from crotch		23.8	25	26.2	27.4	28.6	29.8	31			1.2	0.3
D	1/2 knee width 30cm from crotch		18	18.5	19	19.5	20	20.5	21			0.5	0.3
D1	1/2 leg width 42cm from crotch		16	16.5	17	17.5	18	18.5	19			0.5	0.3
E	1/2 hem width		13	13.5	14	14.5	15	15.5	16			0.5	0.3
F	front rise incl. W.b.		23	24	25	26	27.25	28.5	29.75			1/1.25	0.3
G	back rise incl. W.b		32	33	34	35	36.5	38	39.5			1/1.5	0.3
H	inseam		81	81	81	81	81	81	81			0	1
I	zipper length withuot w. b. to bartack		11	11	12	12	13	13	14			0/1	0
J	zipper opening width		2.5	2.5	2.5	2.5	2.5	2.5	2.5			0	0
K	w. b. height		3.7	3.7	3.7	3.7	3.7	3.7	3.7			0	0
L	front pocket opening along w. b.		9	9	9.5	9.5	10	10	10.5			0/0.5	0
M	front pocket opening height along side seam		5	5	5.5	5.5	6	6	6.5			0/0.5	0
N	beltloop width		0.8	0.8	0.8	0.8	0.8	0.8	0.8			0	0
O	back pocket widht		13	13	13.5	13.5	14	14	14.5			0/0.5	0.3
P	back pocket hight		14.5	14.5	15	15	15.5	15.5	16			0/0.5	0.3
Q	CB yoke height		4.5	4.5	5	5	5.5	5.5	6			0/0.5	0
R	yoke height height at side seam		2.5	2.5	3	3	3.5	3.5	4			0/0.5	0

pls. send 1st sample size 36+42

DATE: 15/9/17		
DEPARTMENT: women	BRAND:	DESIGNER:
STYLE NO.:	SEASON:	DESCRIPTION: elastic skirt
FABRIC COMPOSITION AND TREATMENT: punto roma: 95%polyester 5%spandex 300gsm		FABRIC WEIGHT/ GG:
COMBO'S QTY:	DD:	
PLEASE DEVELOP FIRST SAMPLE ONLY AFTER RECEIVING CONFIRMATION. <b>FIRST SAMPLE SHOULD BE AS SIMILAR AS POSSIBLE TO ORIGINAL.</b>		



color: Black  
please send LD

STYLE NO.
WORKMANSHIP

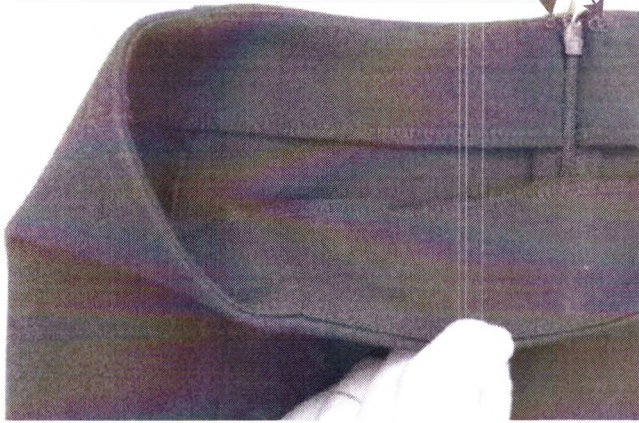
front

back



inner hook above zipper

inner aistband facing with fusible



woven main labe+size label

stable stitch at inner w.b at each cut

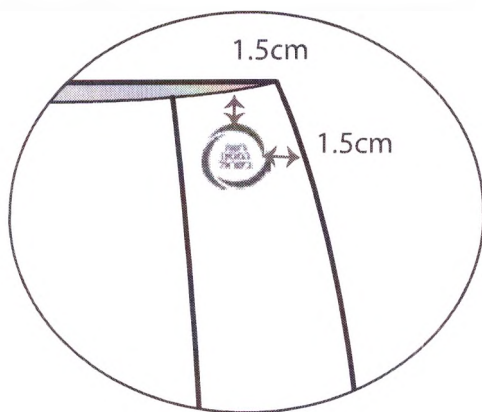


STYLE NO.

ACCESORIES AND TRIMS

Embroidery logo

EMB. logo position- on wearer left side  
1.5cm below waist  
and 1.5cm towards left cut



EMB. colors

text should be optic white embroidery  
frame should be blue 19-4049tpx

black body



EMB



3.5 cm

correct logo

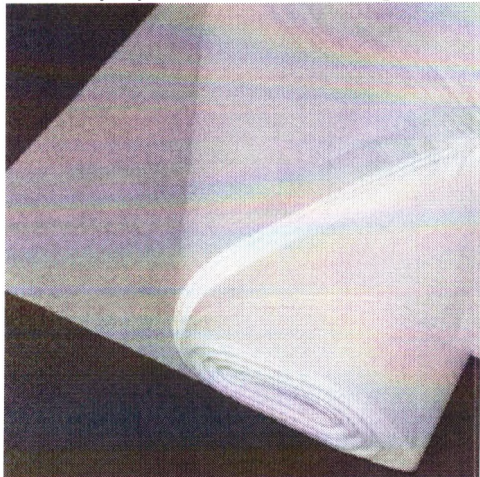


Trim	size	color	quality	quantity
hook		DTM	metal	1 pair
hidden zipper		DTM	YKK	1
puller		DTM	YKK	1

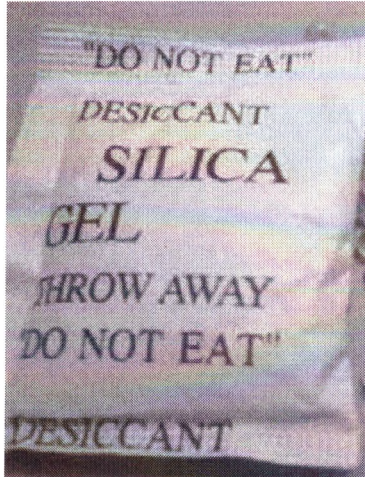
STYLE NO.

PACKING

tissue paper inside folding



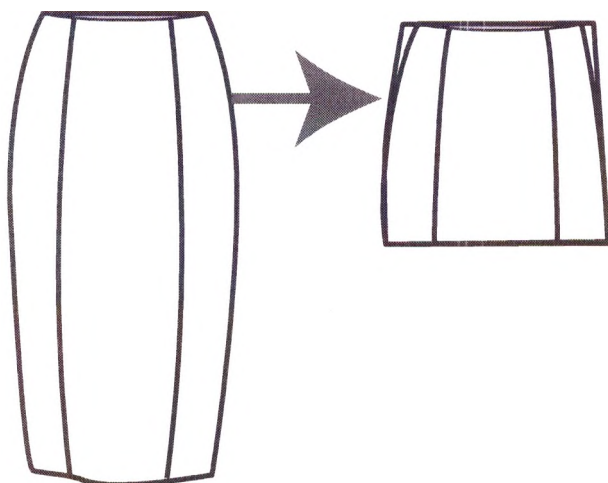
silica gel inside folding



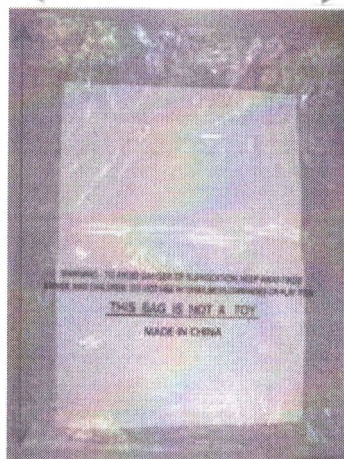
garment folding inside polybag



skirt folding way- to half



28cm



37cm

warning text on polybag

WARNING - TO AVOID DANGER OF SUFFOCATION , KEEP AWAY FROM  
BABIES AND CHILDREN . DO NOT USE IN CRIBS , BEDS , CARRIAGES OR PLAY PENS .

**THIS BAG IS NOT A TOY**

MADE IN CHINA

↑  
to be update

STYLE NO.

SIZE SPEC

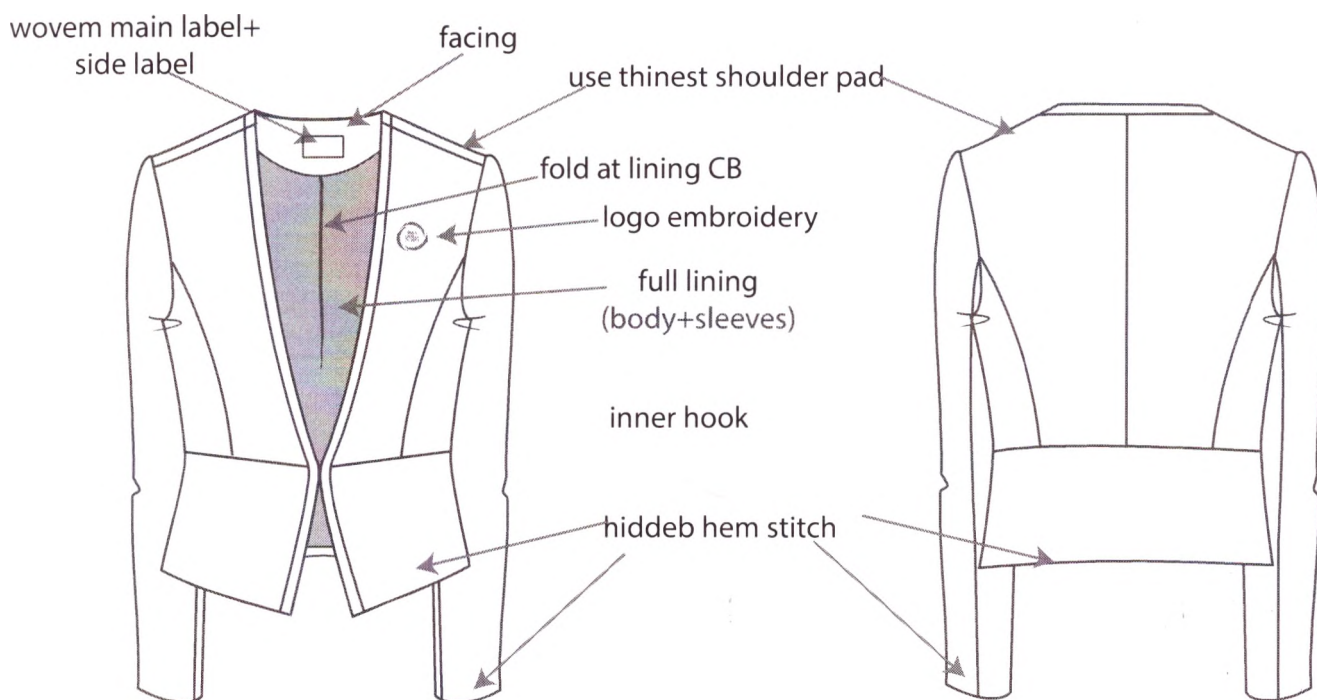
		Style	Supplier style #	Season							page		
											1/2		
<b>Elastic Skirt</b>		<b>Supplier's Name</b>	<b>fabric c</b>								<b>Date</b>		
			95% polyester 5% spandex								15/9/17		
<b>SIZE CHART:</b>													
				XXS	XS	S	M	L	XL	2XL	grading	Tolerance	
<b>A</b>	1/2 waistband width straight			33	36	39	42	45	48	51	3	0.5	
<b>B</b>	1/2 hips width 16cm from w.b. straight			38	41	44	47	50	53	56	3	0.5	
<b>C</b>	1/2 bottom width straight			37	40	43	46	49	52	55	3	0.5	
<b>D</b>	total length c.f.			53	53	53	53	53	53	53	0	0.5	
<b>E</b>	total length c.b.			54	54	54	54	54	54	54	0	0.5	
<b>F</b>	CB slit length			15	15	15	15	15	15	15	0	0.3	
<b>G</b>	CB slit overlap			3.5	3.5	3.5	3.5	3.5	3.5	3.5	0	0	
<b>H</b>	inner w.b facing height			5	5	5	5	5	5	5	0	0	
<b>I</b>	zipper length			16	16	16	16	16	16	16	0	0.3	
<b>J</b>	front panel width between cuts at waist			23	24.5	26	27.5	29	30.5	32	1.5	0.3	
<b>K</b>	front panel width between cuts at bottom			23.5	25	26.5	28	29.5	31	32.5	1.5	0.3	
<b>L</b>	back panel width between cuts at waist			24	25.5	27	28.5	30	31.5	33	1.5	0.3	
<b>M</b>	back panel width between cuts at bottom			21	22.5	24	25.5	27	28.5	30	1.5	0.3	

pls. send 1st sample size XS+L

DATE: 15/9/17		
DEPARTMENT: women	BRAND:	DESIGNER: Veronica
STYLE NO.:	SEASON:	DESCRIPTION: tailored jacket
FABRIC COMPOSITION AND TREATMENT: shell:80% polyester 16% viscose 4% spandex 240g lining:100%polyester 60g		FABRIC WEIGHT/ GG:
COMBO'S QTY:	DD:	
PLEASE DEVELOP FIRST SAMPLE ONLY AFTER RECEIVING CONFIRMATION. <b>FIRST SAMPLE SHOULD BE AS SIMILAR AS POSSIBLE TO ORIGINAL.</b>		

**FRONT**

**BACK**



color: Black  
please send LD

STYLE NO.

WORKMANSHIP

front look



front cuts



back cuts



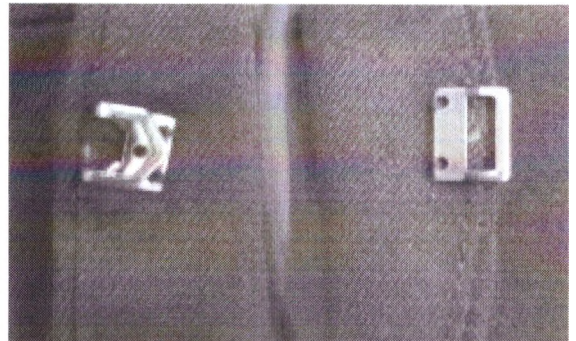
neck facing



inner workmanship



hook design at CF



STYLE NO.

ACCESORIES AND TRIMS

Embroidery logo

EMB. colors

text should be optic white embroidery  
frame should be blue 19-4049tpx

correct logo



black body



EMB



Trim	size	color	quality	quantity
hook	1.4cm		metal	1 pair

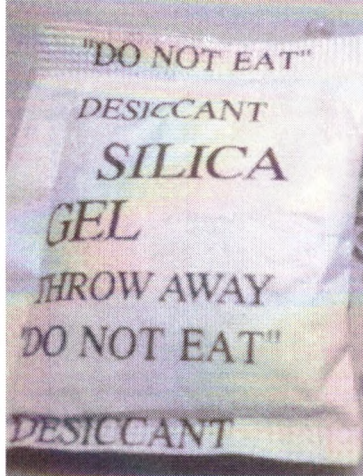
STYLE NO.

PACKING

tissue paper inside folding



silica gel inside folding



garment folding inside polybag



jacket folding way- flat packing



polybag warning

WARNING - TO AVOID DANGER OF SUFFOCATION , KEEP AWAY FROM  
BABIES AND CHILDREN . DO NOT USE IN CRIBS , BEDS , CARRIAGES OR PLAY PENS .

THIS BAG IS NOT A TOY

MADE IN CHINA

to be update

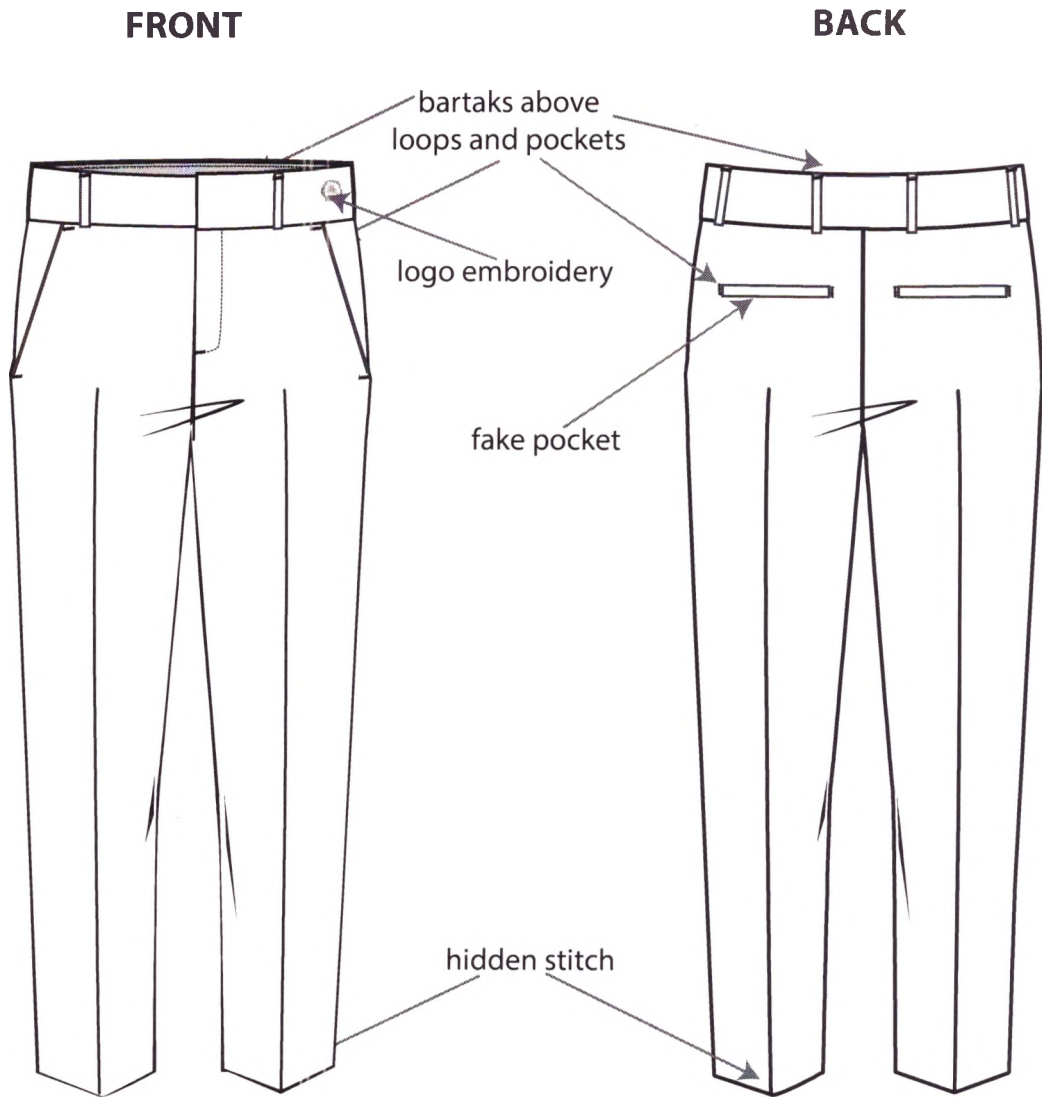
STYLE NO.

SIZE SPEC

					Supplier's style #		Season			page	
tailored jacket		Supplier's Name			fabric comp.:					Date	
										16/9/17	
SIZE CHART:					36	38	40	42	44	grading tolerance	
A	1/2 chest width 1cm under armhole				43	45	48	51	54	2.0	0.5
B	1/2 waist width				39	41	44	47	50	2.0	0.5
C	1/2 bottom width				48	50	53	56	59	2.0	0.5
D	total length from h.s.p				61.5	62.5	63.5	64.5	65.5	1	0.5
E	C B. length				53	54	55	56	57	1	0.5
F	neck opening from cut to cut				20.5	21	21.5	22	22.5	0.5	0.3
G	hook position from hsp				38	39	40	41	42	1	0.5
H	back neck drop				0.7	0.7	0.7	0.7	0.7	0	0
I	across shoulders seam to seam				37.5	39	40.7	42.4	44.1	1.5/1.7	0.5
J	1/2 armhole straight				20.3	21	21.7	22.4	23.1	0.7	0.3
K	sleeve length				61	61	61	61	61	0	0.5
L	1/2 bicep width 1cm under armhole				15.8	16.5	17.2	17.9	18.6	0.7	0.3
M	1/2 sleeve hem width				11.5	12	12.5	13	13.5	0.5	0
N	CF panel width				2.5	2.5	2.5	2.5	2.5	0	0
O	chest EMB. Logo position from hsp				19.5	20	20.5	21	21.5	0.5	0.3

pls. send 1st sample size 36+42

DATE: 15/9/17		
DEPARTMENT: women	BRAND:	
STYLE NO.:	SEASON:	DESCRIPTION: tailored pants
FABRIC COMPOSITION AND TREATMENT: shell:57%cotton 40%polyester 3%elastane 285g pocket lining:100%cotton		FABRIC WEIGHT/ GG:
COMBO'S QTY:	DD:	
PLEASE DEVELOP FIRST SAMPLE ONLY AFTER RECEIVING CONFIRMATION. <b>FIRST SAMPLE SHOULD BE AS SIMILAR AS POSSIBLE TO ORIGINAL.</b>		



color: Black  
please send LD

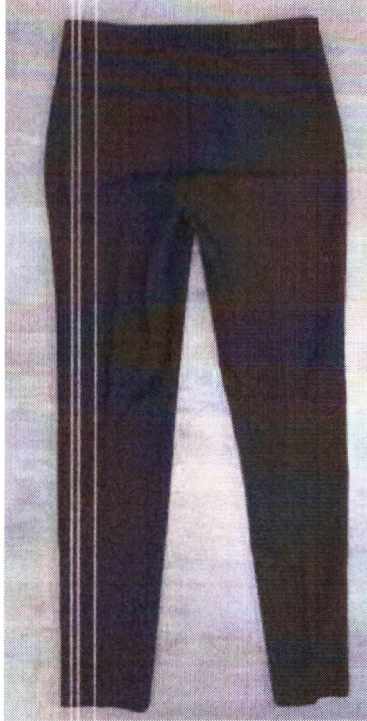
STYLE NO.

WORKMANSHIP

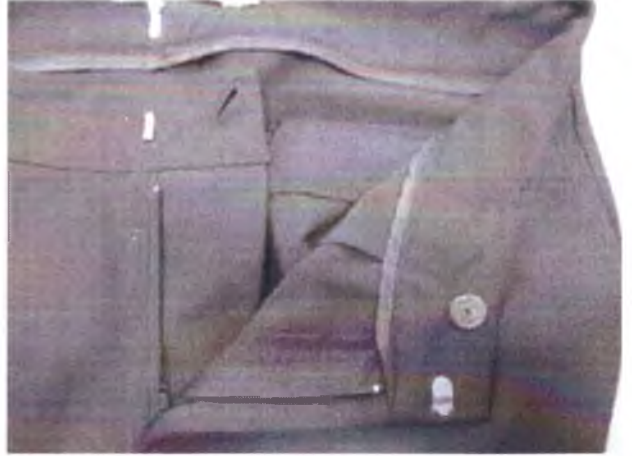
front



back



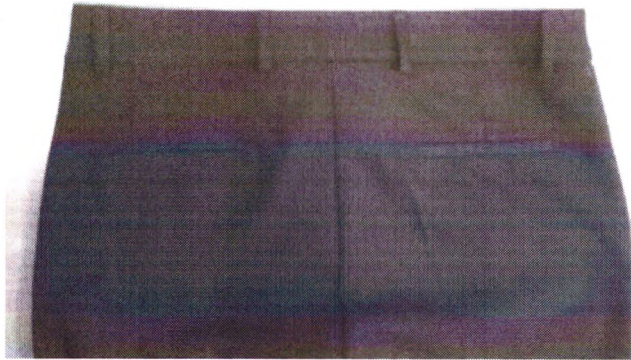
opening- zipper with hook and inner button



front pockets



back fake pockets



inner w.b clean with inner tape



opening



STYLE NO.

ACCESORIES AND TRIMS

Embroidery logo

correct logo



EMB. colors

text should be optic white embroidery  
frame should be blue 19-4049tpx

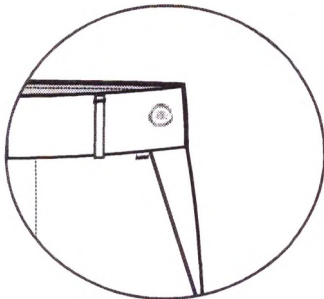
black body



EMB



logo position  
on left wearer side w.b



Trim	size	color	quality	quantity
button	5mm	transperant	plastic	1
hook	1.5cm	silver	metal	1 pair
zipper	#3	DTM	YKK	1
puller	#3	DTM	YKK	1

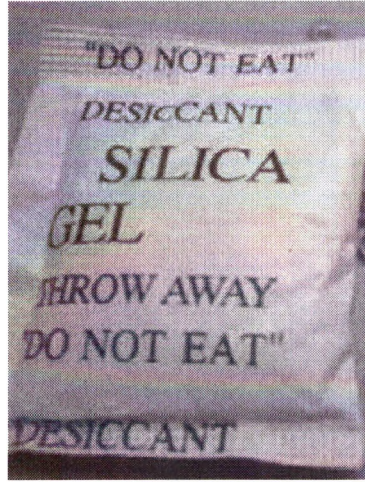
STYLE NO.

PACKING

tissue paper inside folding



silica gel inside folding



garment foding inside polybag



pants folding way



polybag warning

**WARNING - TO AVOID DANGER OF SUFFOCATION , KEEP AWAY FROM  
BABIES AND CHILDREN . DO NOT USE IN CRIBS , BEDS , CARRIAGES OR PLAY PENS .**

**THIS BAG IS NOT A TOY**

**MADE IN CHINA**

↑  
to be update

